



Don't Let Life Pass You By  
Because Of Oral Bone Loss...

*...Ask For Dental  
Implant Solutions  
From BIOMET 3i*



**Scan With Your  
Smartphone!**

In order to scan QR codes,  
your mobile device  
must have a QR code  
reader installed.

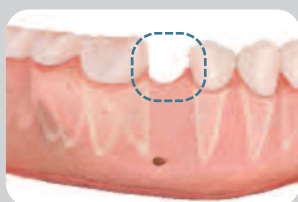
**BIOMET 3i™**

**PROVIDING SOLUTIONS - ONE PATIENT AT A TIME™**

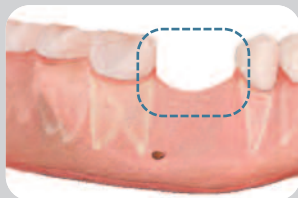
Your doctor has recommended that you have a surgical procedure that may help prevent oral bone loss or facilitate bone growth. This brochure is designed to provide you with answers to frequently asked questions regarding oral bone loss and treatment solutions available to you to preserve your healthy smile and appearance.\*



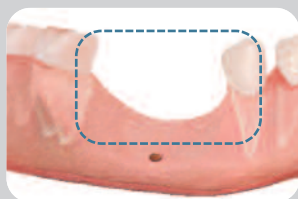
#### Stages Of Oral Bone Loss



**Stage 1:** Missing tooth creates a bony defect in the jaw.



**Stage 2:** If left untreated, you may experience additional bone loss, which can lead to additional tooth loss.



**Stage 3:** Throughout time, untreated bone loss may create a significantly changed facial appearance and loss of normal function.

\*This brochure is not intended to provide medical advice. Consult with your dentist to determine whether this treatment is appropriate for your condition.

## **What Is Oral Bone Loss?**

Oral bone loss is when a person no longer has bone where nature intended for bone to be present. Oral bone loss can result from trauma, periodontal disease, bone atrophy following loss/extraction of natural teeth or after wearing dentures for an extended length of time.

## **What Are The Consequences Of Oral Bone Loss?**

Oral bone loss may compromise healthy teeth and cause the loss of natural facial contours. Those who have significant bone loss have an increased risk of losing teeth and are at higher risk for injury resulting from fracture of their jaw.

## **How Can I Benefit From Oral Bone Loss Treatment?**

Treating areas with existing oral bone loss, as well as areas at risk for accelerated bone loss (such as places where teeth used to be), may prevent additional tooth and oral bone loss. Because the upper and lower jaw bone create the shape for the lower third of your face, preserving or rebuilding bone can help to maintain your appearance throughout time.

## **Why Do I Need Oral Bone Loss Treatment?**

There are a wide variety of options available for patients who have experienced oral bone loss anywhere in the upper or lower jaw.

### **You May Need Oral Bone Loss Treatment:**

- To Support Dental Implants – Bone support is needed for stability of a dental implant. Regeneration of bone at the time of implant placement may assist with stability and anchoring of the dental implant to bone. It may also help to facilitate bone growth to provide a more ideal location for dental implant placement by creating additional bone volume.
- To Treat Periodontal Disease – Bone regeneration is used to treat oral bone loss due to periodontal disease.
- To Treat Facial Trauma – Bone regeneration is used to treat patients with major bone loss following a traumatic event.
- If Your Doctor Recommends A Sinus Lift – For patients who do not have sufficient bone height in the upper jaw to support the placement of dental implants.
- If Your Doctor Recommends Tooth Extractions – Bone regeneration is used to treat areas of trauma or loss of bone due to tooth extractions.

## **Why Do I Need Bone Grafting?**

Bone grafting is typically recommended when there is insufficient bone in the jaw to place a dental implant. Insufficient bone is typically a result of bone resorption, which takes place after tooth loss. The bone grafting material is used to restore bone that has been lost to resorption.

## **What Is Bone Grafting?**

Bone grafting is a procedure that is used to build bone in areas that are deficient of bone, where there are bone defects or in areas that need structural support. Dental implants have proven to be the most advanced and reliable therapy to replace missing teeth. Regenerative procedures performed in conjunction with implant therapy may improve the success of your dental implants where bone loss is present.

# BIOMET **3i**™ Offers A Variety Of Products That Treat Oral Bone Loss

Your doctor may have recommended a surgical procedure in which one of the following BIOMET **3i** Grafting Materials will be used.

## **Allograft Grafting Material RegenerOss® Allograft**

Derived from human tissue, RegenerOss® Allograft provides a safe alternative to synthetic or self-produced grafting materials. Every year, allograft is used in more than 1,000,000 transplant cases, such as knee reconstruction, bone replacement in the oral cavity and areas of periodontal defects.

RegenerOss® Allograft is provided by the University of Miami Tissue Bank (UMTB). Established in 1970, UMTB is accredited by the American Association of

Tissue Banks (AATB) and has provided safe and effective grafts and tissue for transplantation without any adverse event since its inception. To ensure the safety of the tissue, the tissue undergoes screenings at recovery and throughout processing and packaging. In addition, all test results and records are reviewed by a medical director for final approval before the tissue is released for patient use. These techniques are utilized to maintain an environment that is free of contamination yet protects the biologic integrity and safety of the tissues.



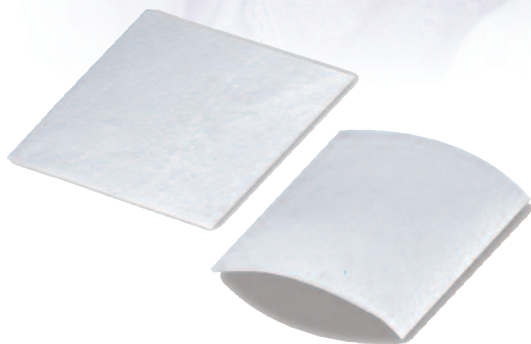




**Allograft Putty Grafting Material  
RegenerOss® Allograft Putty**

RegenerOss® Allograft Putty is another form of allograft that is contained in a moldable carrier material for easy application to the defect site. The putty carrier is a plant-based, non-toxic material called lecithin, which is derived from soybeans. The carrier does not contain any residual soybean proteins and therefore may be used by patients with soybean allergies.

# BIOMET 3i™ Offers A Variety Of Products That Treat Oral Bone Loss



## **Resorbable Collagen Membrane OsseoGuard® Membranes**

OsseoGuard® and OsseoGuard Flex® Membranes are resorbable collagen barriers designed to provide a barrier between the grafted area and the soft tissue (gums), allowing the defect to fill in with bone instead of soft tissue. It also helps to contain the graft material within the defect during healing. The OsseoGuard® and OsseoGuard Flex® Membranes are made from highly purified bovine collagen due to collagen's natural role in the body's healing process.

## Xenograft Grafting Material Endobon® Xenograft Granules

Endobon® Xenograft Granules are grafting material derived from bovine bone and serve as a scaffold for bone growth. Manufactured by BIOMET® France, Endobon® Xenograft Granules have more than 10 years of combined clinical use in orthopedic and oral maxillofacial procedures. The two-step high temperature manufacturing process eliminates bacteria and viruses.



---

## Indications/Contraindications

Indications for Use: **BIOMET 3i**™ Dental Implants are intended for surgical placement in the upper or lower jaw to provide a means for prosthetic attachment in single tooth restorations and in partially or fully edentulous spans with multiple single teeth utilizing delayed or immediate loading, or with a terminal or intermediary abutment for fixed or removable bridgework and to retain overdentures.

BIOMET **3i** OSSEOTITE® and NanoTite™ Dental Implants are intended for immediate function on single tooth and/or multiple tooth applications when good primary stability is achieved, with appropriate occlusal loading, in order to restore chewing function. Additional Indications: BIOMET **3i** Dental Abutments and Overdenture Bars are intended for use as an accessory to endosseous dental implants to support a prosthetic device in a partially or edentulous patient. These are intended for use to support single and multiple tooth prostheses, in the mandible or maxilla. The prostheses can be screw or cement retained to the abutment. PEEK Abutment Posts and Temporary Cylinders are intended for use as an accessory to endosseous dental implants to support a prosthetic device in a partially or fully edentulous patient. These are intended for use to support single and multiple unit prostheses in the mandible or maxilla for up to 180 days during endosseous and gingival healing, and are for non-occlusal loading of single and multiple unit provisional restorations. The prostheses can be screw and/or cement retained to the abutment. These Temporary Posts and Cylinders require a minimum interarch space of 6.0mm and a maximum angulation of 15°. These also allow for occlusal loading of single and multiple unit restorations of integrated implants for guided soft tissue healing. The QuickBridge® Provisional Components are intended to be mated with BIOMET **3i** Conical Abutments for use as an accessory to endosseous dental implants to support a prosthetic device in a partially or fully edentulous patient. The QuickBridge® Provisional Components are intended to support multiple unit prostheses in the mandible or maxilla for up to 180 days during endosseous and gingival healing.

Contraindications: Placement of dental implants may be precluded by patient conditions that are contraindications for surgery. BIOMET **3i** Dental Implants should not be placed in patients where the remaining jaw bone is too diminished to provide adequate implant stability.



Don't Let Life Pass You By –  
 Contact Your Dentist Today  
 And Get Your Smile Back.



**BIOMET 3i**  
 4555 Riverside Drive  
 Palm Beach Gardens, FL 33410  
 1-800-342-5454  
 Outside The U.S.: +1-561-776-6700  
 Fax: +1-561-776-1272  
 www.biomet3i.com

**EC REP** **BIOMET 3i**  
 Europe, Middle East & Africa  
 WTC Almeda Park, Ed. 1, Planta 1ª  
 Pl. de la Pau, s/n  
 08940, Cornellà de Llobregat  
 (Barcelona) Spain  
 Phone: +34-93-470-55-00  
 Fax: +34-93-371-78-49

**BIOMET 3i™**

PROVIDING SOLUTIONS – ONE PATIENT AT A TIME™

OsseoGuard, OsseoGuard Flex, OSSEOTITE, QuickBridge and RegenerOss are registered trademarks of BIOMET 3i LLC. NanoTite and Providing Solutions - One Patient At A Time are trademarks of BIOMET 3i LLC. Endobon is a registered trademark of BIOMET Deutschland GmbH. ©2012 BIOMET 3i LLC.



REV A 12/11